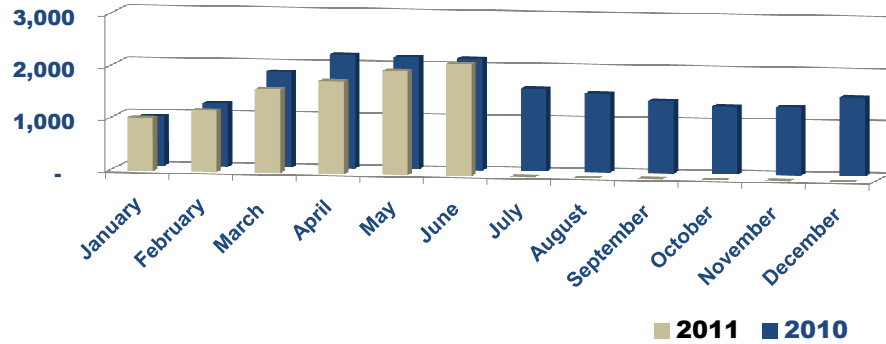
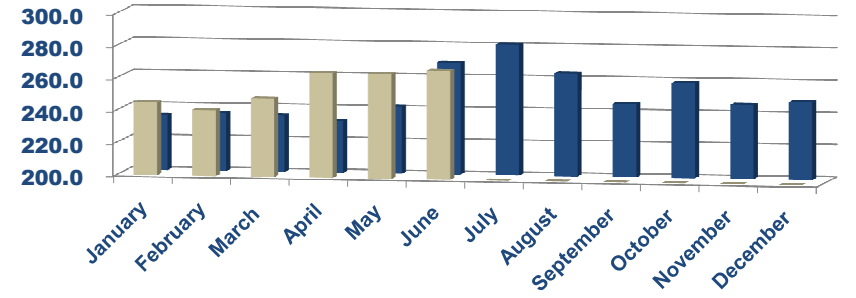




**Residential Single Family Closed**



**Residential Single Family Avg. Sales Price**



	Monthly Trends				Sales by Price Range										Percentage of List Price										Jun-11	
	Sold Volume (\$Mil)	Number of Sales	Avg. Price (\$K)	Avg. Days on Market	<100k	100k-149k	150k-199k	200k-299k	300k-399k	400k-499k	500k-749k	750k-999k	>1M	Total	<100k	100k-149k	150k-199k	200k-299k	300k-399k	400k-499k	500k-749k	750k-999k	>1M	Total		
Jul 10	445.4	1,585	281.0	70	109	285	321	393	207	112	97	34	27	1,585	83.7%	93.0%	93.9%	93.8%	93.2%	93.9%	93.1%	90.0%	84.2%	92.2%		
Aug 10	398.2	1,510	263.7	72	134	319	307	333	189	89	87	30	22	1,510	85.3%	68.2%	68.8%	93.6%	92.5%	92.9%	90.6%	89.5%	87.5%	84.8%		
Sep 10	341.5	1,391	245.5	78	139	287	310	309	170	91	49	22	14	1,391	84.7%	88.1%	92.9%	92.7%	92.0%	92.3%	92.0%	86.3%	86.8%	91.1%		
Oct 10	337.2	1,303	258.8	88	132	285	257	295	147	70	74	23	20	1,303	77.1%	90.4%	65.7%	91.8%	91.9%	92.6%	91.2%	88.7%	80.2%	85.5%		
Nov 10	319.9	1,301	245.9	87	143	309	274	265	148	69	56	22	15	1,301	82.6%	91.0%	92.5%	91.4%	90.9%	90.4%	91.5%	90.5%	82.9%	90.2%		
Dec 10	374.5	1,510	248.0	91	132	332	336	343	164	99	66	23	15	1,510	83.1%	90.9%	91.7%	92.1%	92.3%	93.5%	89.2%	88.3%	77.9%	90.3%		
Jan 11	252.6	1,031	245.0	88	106	226	231	239	126	39	36	10	18	1,031	84.5%	91.4%	91.9%	62.9%	92.7%	92.5%	89.8%	92.4%	87.7%	82.3%		
Feb 11	284.8	1,182	240.9	93	135	252	248	286	125	51	57	18	10	1,182	87.7%	91.0%	92.5%	89.7%	92.6%	93.6%	91.7%	87.4%	88.9%	91.0%		
Mar 11	399.6	1,607	248.6	94	148	374	344	361	178	77	77	25	23	1,607	84.1%	90.2%	93.1%	92.8%	92.5%	92.5%	93.6%	89.4%	88.1%	91.7%		
Apr 11	471.4	1,779	265.0	81	206	363	361	416	188	100	81	32	32	1,779	85.8%	93.1%	93.9%	94.5%	94.3%	94.1%	94.1%	90.8%	89.8%	93.0%		
May 11	528.5	1,995	264.9	75	180	432	401	456	227	125	117	25	32	1,995	85.7%	72.5%	93.5%	95.0%	94.1%	93.0%	91.6%	88.3%	89.6%	90.0%		
Jun 11	574.7	2,149	267.4	72	176	448	443	508	268	115	116	39	36	2,149	66.6%	93.2%	78.8%	94.6%	93.9%	87.1%	94.1%	94.0%	66.7%	86.8%		
YTD	7,273	28,823	252.4	77	2,602	6,282	6,332	6,609	3,308	1,532	1,355	428	375	28,823	83.5%	88.0%	88.1%	91.8%	90.4%	92.4%	91.9%	90.2%	77.8%	89.1%		



